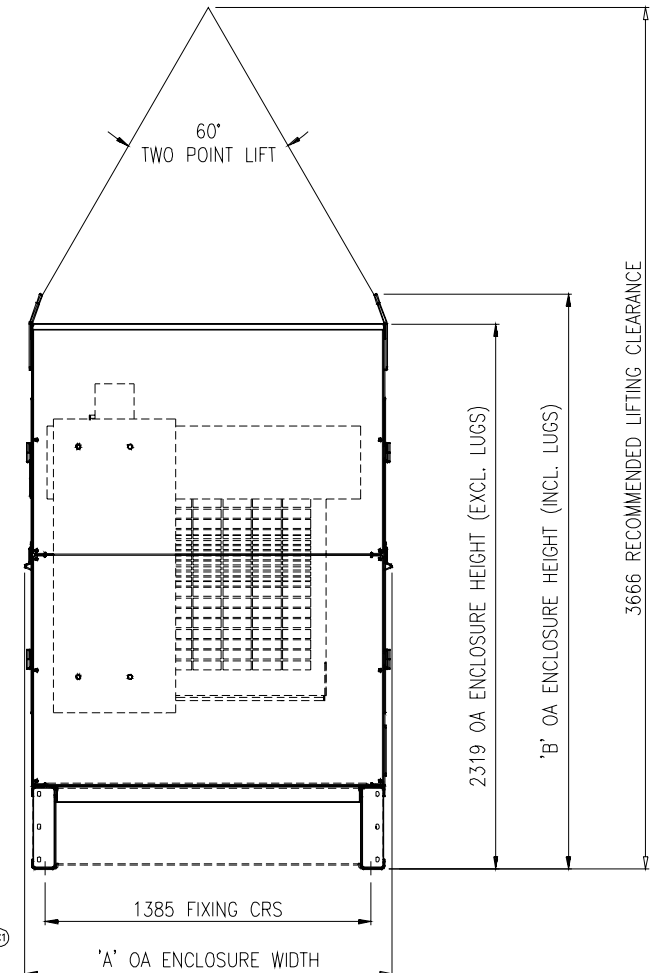
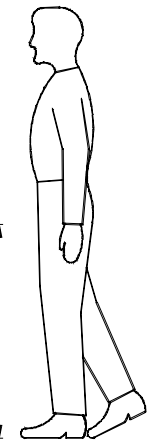
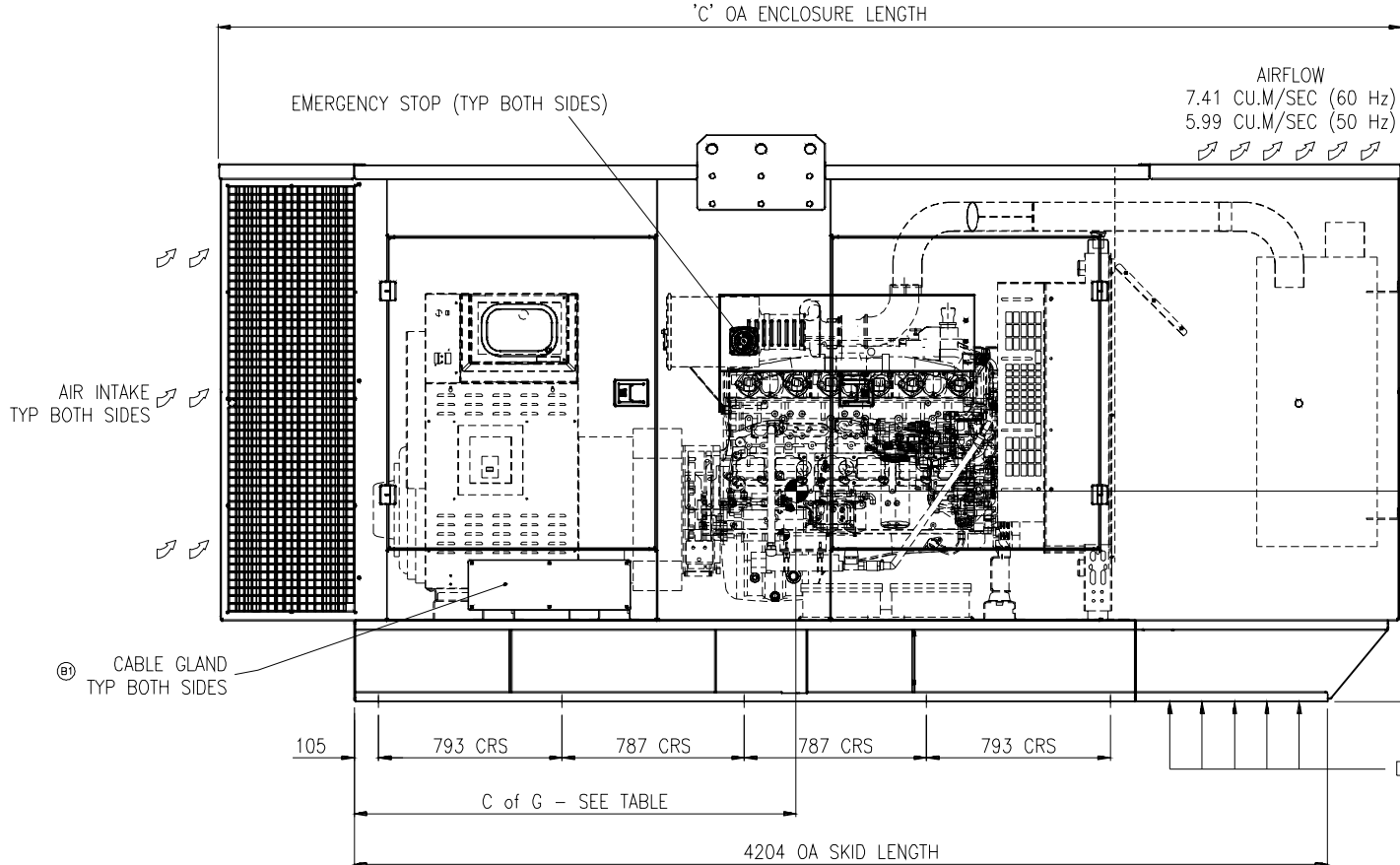


INSTALLATION NOTES:

- PLEASE ALLOW THE FOLLOWING PARAMETER CLEARANCES AROUND THE ENCLOSURE:
SIDE (INCL. OPEN DOORS): 500mm
ABOVE THE CANOPY: 1000mm
- BEDFRAME FIXING POINTS REQUIRE AN M20 FASTENING ARRANGEMENT
- PLEASE REFER TO MANUAL FOR TWO-POINT LIFTING INSTRUCTIONS
- TERMS AND CONDITIONS CAN BE FOUND AT THE FOLLOWING:-
www.cumminspower.com/terms



MODEL	ENGINE	DRY WEIGHT (kg)	WET WEIGHT (kg)	WET WEIGHT WITH FUEL(kg)	OIL SUMP CAPACITY (L)	DIMENSIONS (mm)				C of G (mm)
						A	B	C	D	
C300D5 & C275D6	NT855G6	4664	4718	5441	14	1563	2447	5110	819	1579
C350D5 & C300D6	NT855G6	4744	4798	5576	14	1563	2447	5110	819	1565
C400D5 & C350D6	NTA855G4 & NTA855G3	4921	4975	5698	14	1563	2447	5110	820	1556
C440D5 & C400D6	NTA855G7 & NTA855G5	5041	5095	5818	14	1563	2447	5110	820	1527

TOLERANCE UNLESS OTHERWISE SPECIFIED	SMALL TO ENGR	NAME	DATE
±0.08	±0.13	J. JONES	13/07/2004
±0.13	±0.25	A. ANDREWS	12/10/2004
±0.25	±0.50	M. BARRENT	12/10/2004

AutoCAD DO NOT SCALE PRINT ANGLE TOL. ±1.0° SCALE: 1:15

THE DOCUMENT IS THE PROPERTY OF CUMMINS POWER GENERATION LTD. IT IS TO BE USED ONLY FOR THE PROJECT AND SITE SPECIFICALLY IDENTIFIED. IT IS NOT TO BE REPRODUCED, COPIED, OR TRANSMITTED IN ANY FORM OR BY ANY MEANS, ELECTRONIC OR MECHANICAL, WITHOUT THE WRITTEN PERMISSION OF CUMMINS POWER GENERATION LTD. OR ITS REPRESENTATIVE.

FOR INTERPRETATION OF DIMENSIONS AND TOLERANCES, SEE SPECIFICATION SHEET 2.

C300 PGK

Cummins Power Generation
Columbus Avenue, Manston, Ramsgate
Kent, CT12 5BF, England, UK

ENCLOSURE OUTLINE

SITE CODE: 0500-4074

SHEET 1 of 1